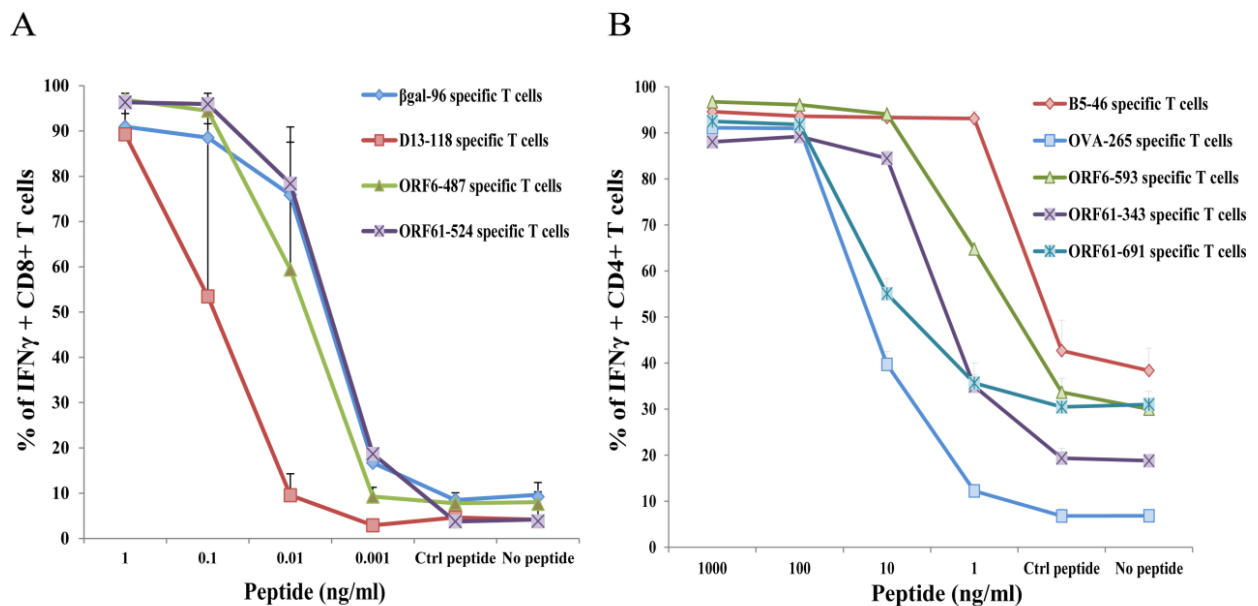


Supplementary Material



Supplementary Figure 2. Avidity of MHV-68 antigen-specific CD8+ and CD4+ T cell lines. **(A)** Avidity of CD8+ T cell lines. DC2.4 cells were pulsed at different peptide concentrations (10^{-8} M (1ng/ml) to 10^{-11} M (0.001ng/ml)). **(B)** Avidity of CD4+ T cell lines. BMDCs were pulsed at different peptide concentrations (10^{-5} M (1000ng/ml) to 10^{-8} M (1ng/ml)). CD8+ or CD4+ T cells with indicated specificity were added to DC2.4 cells or BMDC's, respectively. Target cells were pulsed with either the cognate peptide at declining concentrations or an irrelevant but MHC-binding control peptide at highest concentration or no peptide. After 4h incubation, frequencies of IFN γ -producing CD8+ **(A)** and CD4+ T cells **(B)** were determined by intracellular cytokine staining (ICS) followed by FACS analysis. Data are mean \pm SEM of two independent experiments).